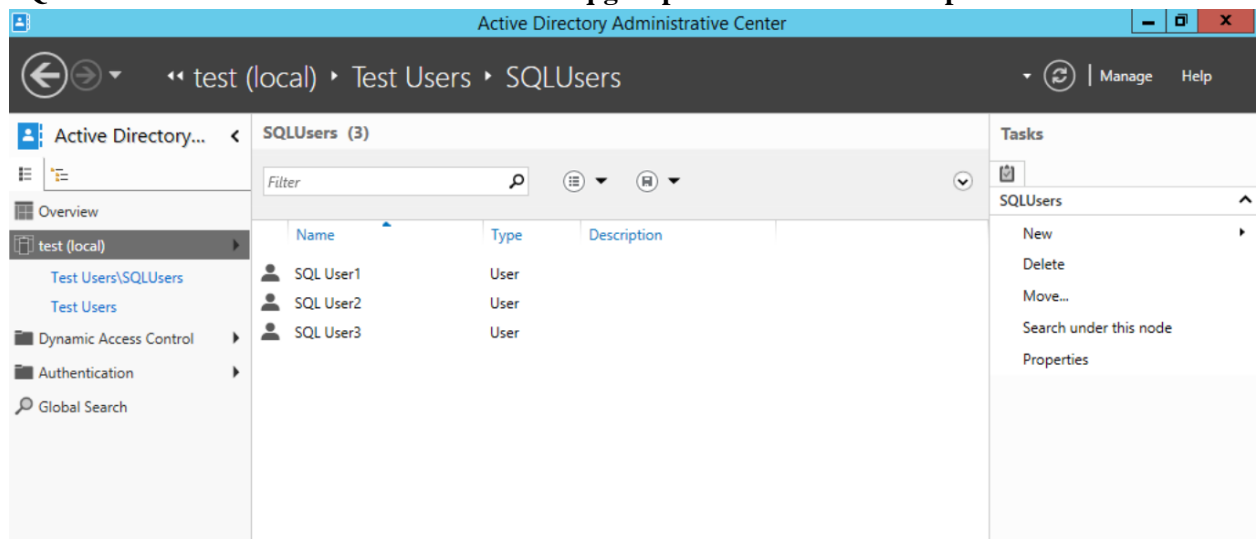
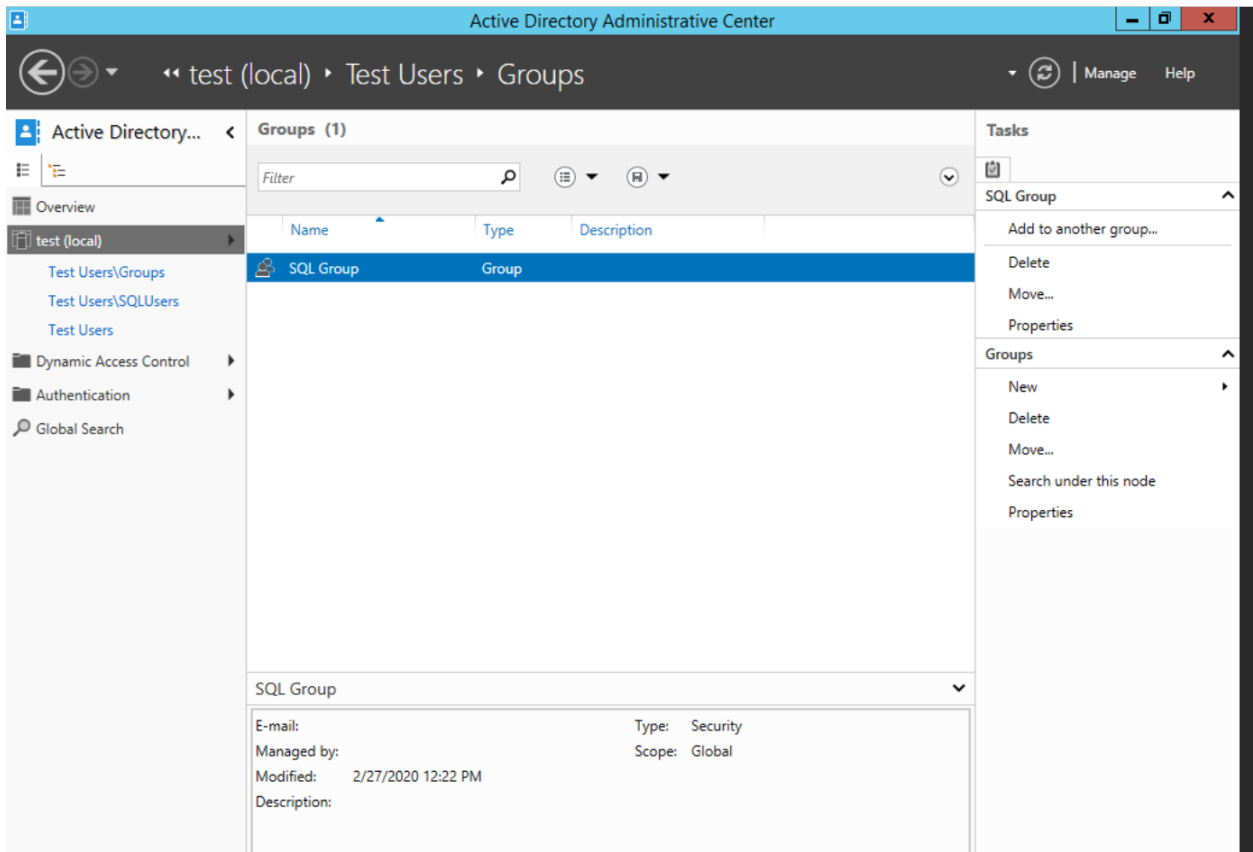


Homework #5: Active Directory and Group Policy Objects

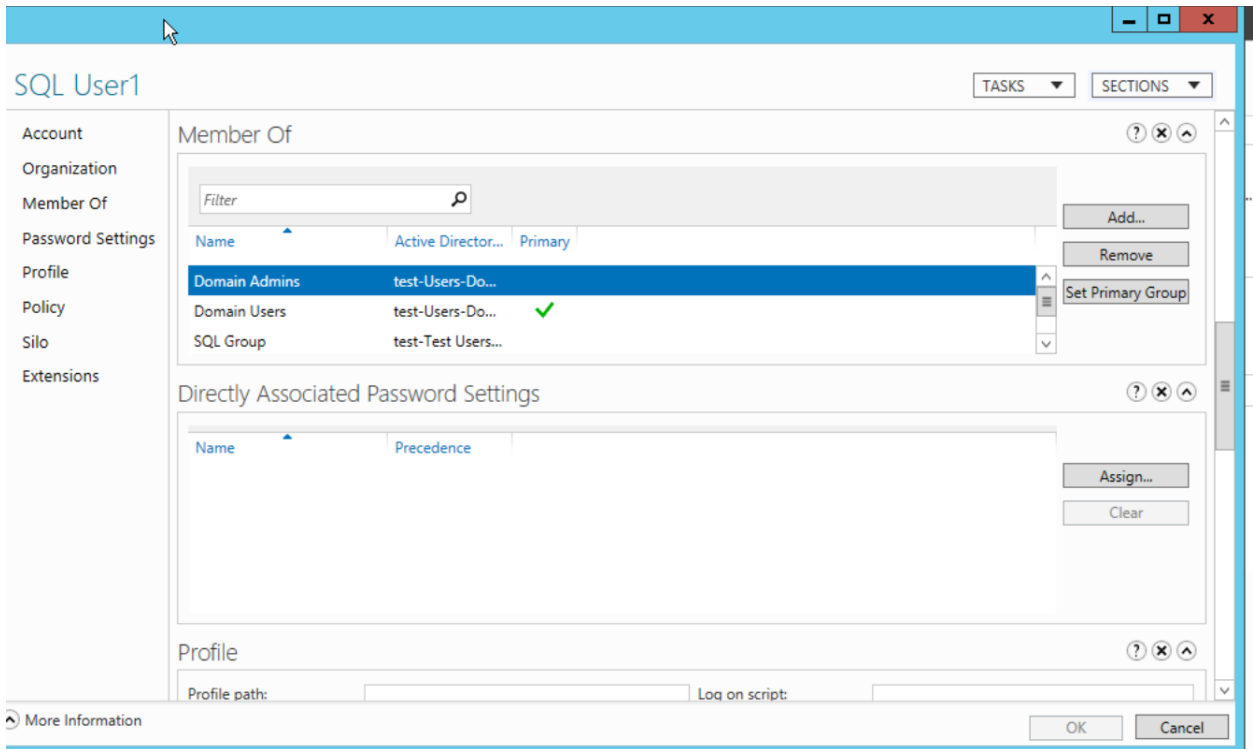
- This is an individual assignment, and is worth 20 points.
- The due date is Thursday, February 27th.
- You need to provide your answers to the “Homework #5 – Tasks.docx” file. Change the file name following the naming convention suggested below.
- Naming convention is as follows: homework, underscore, last name, first initial, and extension (e.g., Homework #5_ImG.docx).
- **If you do not zoom in your screenshots, I will penalize you.**

- **(Task 1)** Show in a screenshot that the three domain users (sqluser1, sqluser2, sqluser3) are created in **SQLUsers** OU. Also show in a screenshot that **sqlgroup** is created in the **Groups** OU.

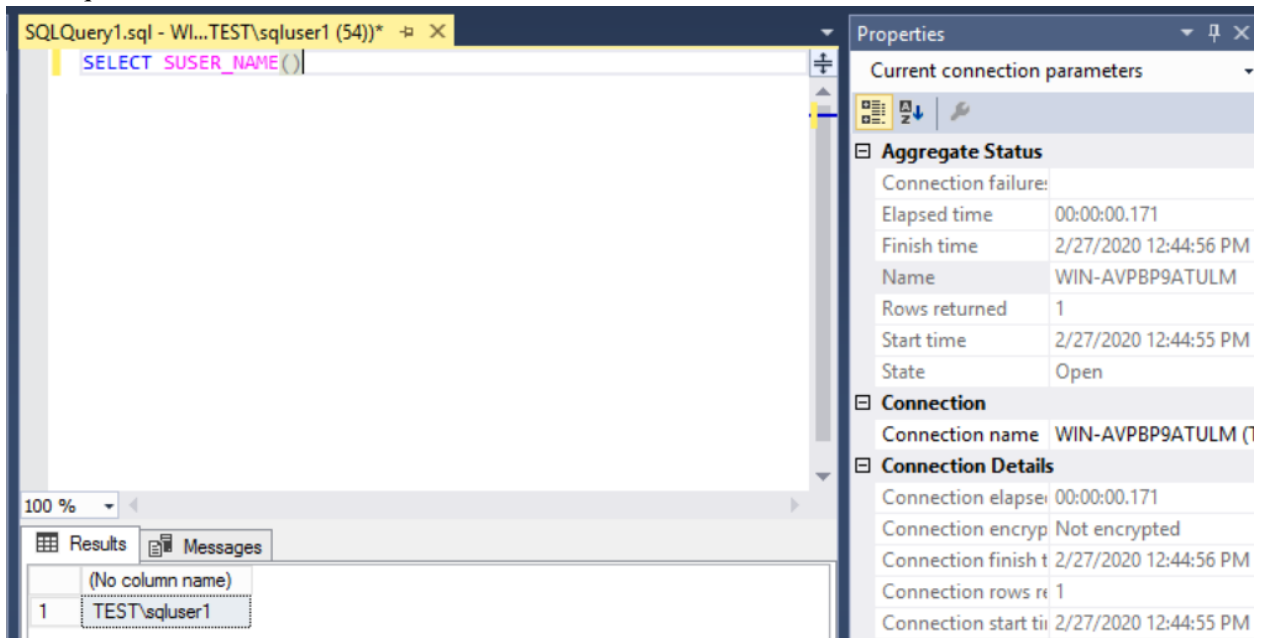




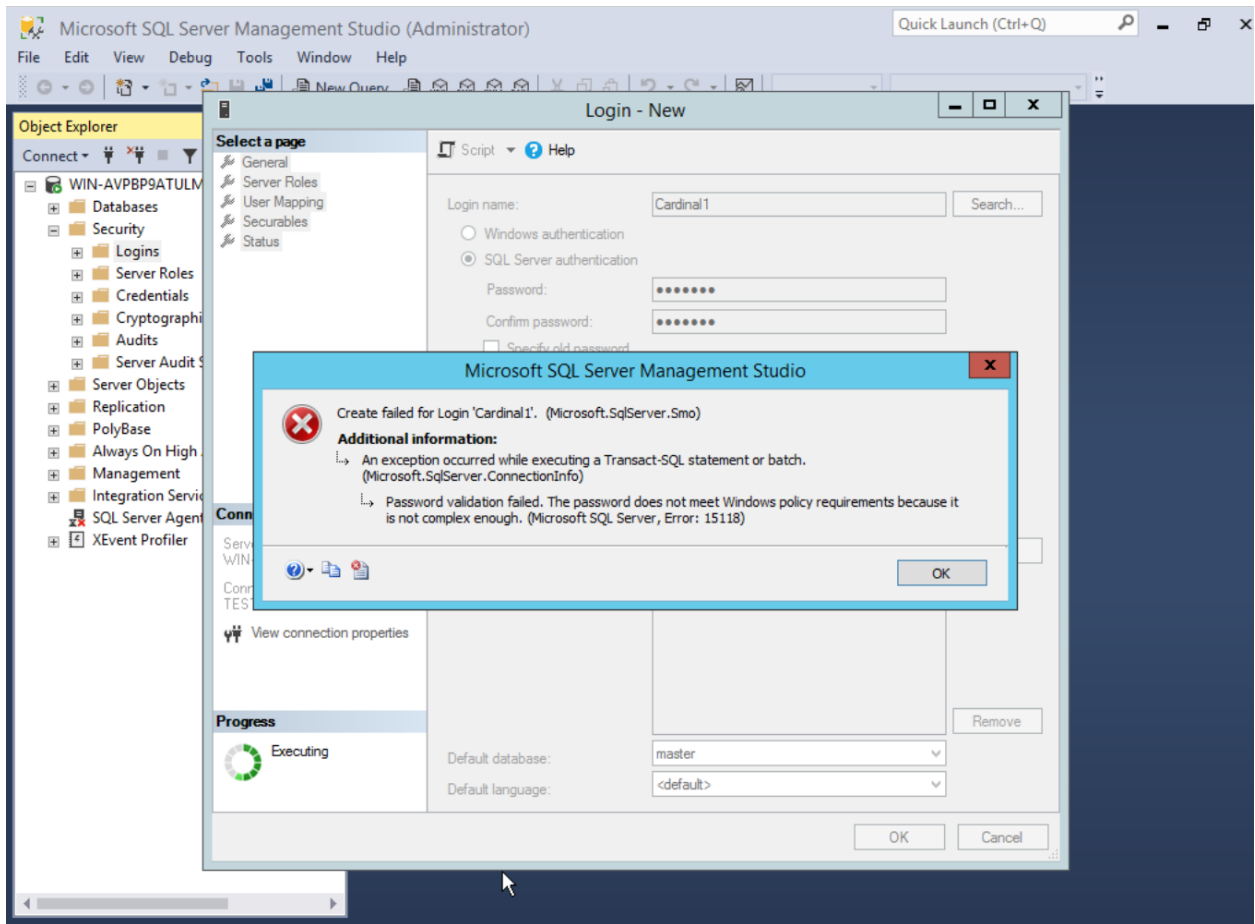
- **(Task 2)** Go to sqluser1 properties and show in a screenshot that sqluser1 is a member of **Domain Admins** and **sqlgroup**.



- **(Task 3)** Run the following query on SQL Server and show in a screenshot that you indeed logged-on with sqluser1.



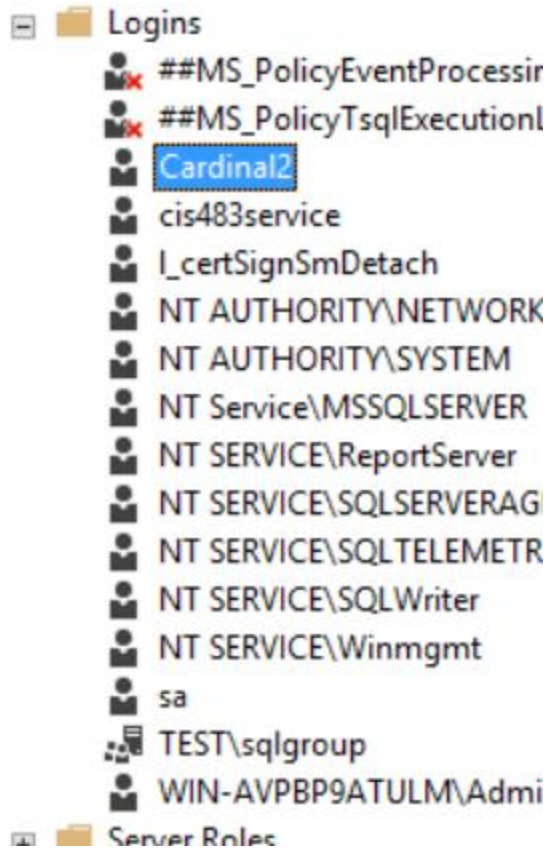
- **(Task 4)** Logon to SQL Server. Create a login “**Cardinal1**”. Select **SQL Server authentication**. Enter the password “1234567”, and show in a screenshot that the login cannot be created. Explain why?



The reason that this account can't be created is due to the password not meeting the criteria. The password meets the criteria of being required to be 7 characters long, but does not meet the complexity requirements (e.g., numerical characters, upper case letter, lower case letter, special characters).

- **(Task 5)** Create a login “**Cardinal1**”. Select **SQL Server authentication**. Enter the password “1234567”, and show in a screenshot that the login is created. Explain why this was possible. Explain also the relationship between the GPO and the SQL Server password policy.

GPO's or Group Policy Objects control user restrictions, requirements, and behaviors of user accounts. Since we changed the password policy for the windows users accounts, any user created would have to meet that policy, including users created under SQL Server.



- (**Task 6**) Create a new AD account using the command **New-ADUser** explained on pp 12-13. Show in a screenshot that the account is indeed created (example below). Also, attach a screenshot that displays the PowerShell execution.

```
PS C:\Users\Administrator> New-ADUser -Name:"Adam Schweitzer" -GivenName:"Adam" -Surname:"Schweitzer"  
PS C:\Users\Administrator>
```

Active Directory Administrative Center

test (local) > Test Users > SQLUsers

Active Directory... < SQLUsers (4)

Overview

test (local) >

- Test Users\SQLUsers
- Users
- Test Users\Groups

Dynamic Access Control >

Authentication >

Global Search

Name	Type	Description
Adam Schweitzer	User	
SQL User1	User	
SQL User2	User	
SQL User3	User	

Adam Schweitzer (Disabled)

User logon: A.Schweitzer Expiration: <Never>
 E-mail: Last log on: <Not Set>
 Modified: 2/27/2020 1:29 PM
 Description:

Summary

Tasks

Adam Schweitzer (Disabled) ^

- Reset password...
- View resultant password settin...
- Add to group...
- Enable

- Delete
- Move...
- Properties

SQLUsers ^

- New >
- Delete
- Move...
- Search under this node
- Properties

WINDOWS POWERSHELL HISTORY